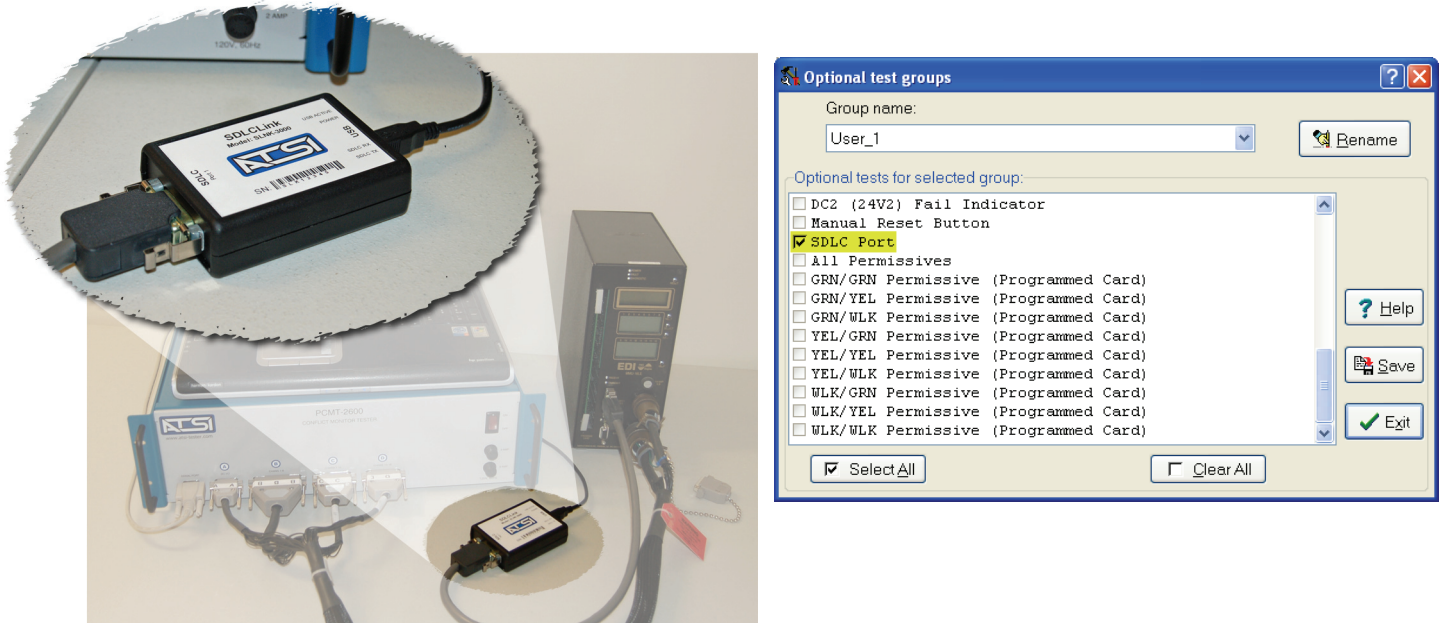




## New Feature for the PCMT 2600 Port 1 / SDLC Testing for TS2 Conflict Monitors

With the **SLNK-3000**, ATSI is now able to add testing of the SDLC port to the standard set of tests performed by the PCMT-2600 conflict monitor tester. When enabled for SDLC testing, the PCMT-2600 software will use the SLNK-3000 to perform the new tests at the end of the standard conflict monitor certification tests.



The SLNK-3000 connects directly to Port 1 of the MMU with a supplied 15 pin D-sub cable, and connects to the computer that is running the PCMT-2600 software via a USB connection.

### Tests Performed in accordance with the NEMA TS 2-2003 standard

- Port 1 timeout test
- Port 1 timeout fault latched on third occurrence in calendar day
- Correct response to Type 0 command frame
- Correct response to Type 1 command frame
- Correct response to Type 3 command frame

### SLNK-3000 Includes

- (1) SLNK-3000 unit
- (1) SDLC Cable
- (1) USB Cable
- (1) Software CD

The SLNK-3000 may be ordered as an option with new PCMT-2600 testers. Existing users may upgrade by simply purchasing the SLNK-3000 and downloading the required software from [www.atsi-tester.com](http://www.atsi-tester.com).

Contact ATSI or your ATSI Distributor for pricing and delivery information.